

S.W. 1/4  
SECTION 23, T.6N., R.2W., S.L.B. & M.

IN WEBER COUNTY & WEST HAVEN CITY

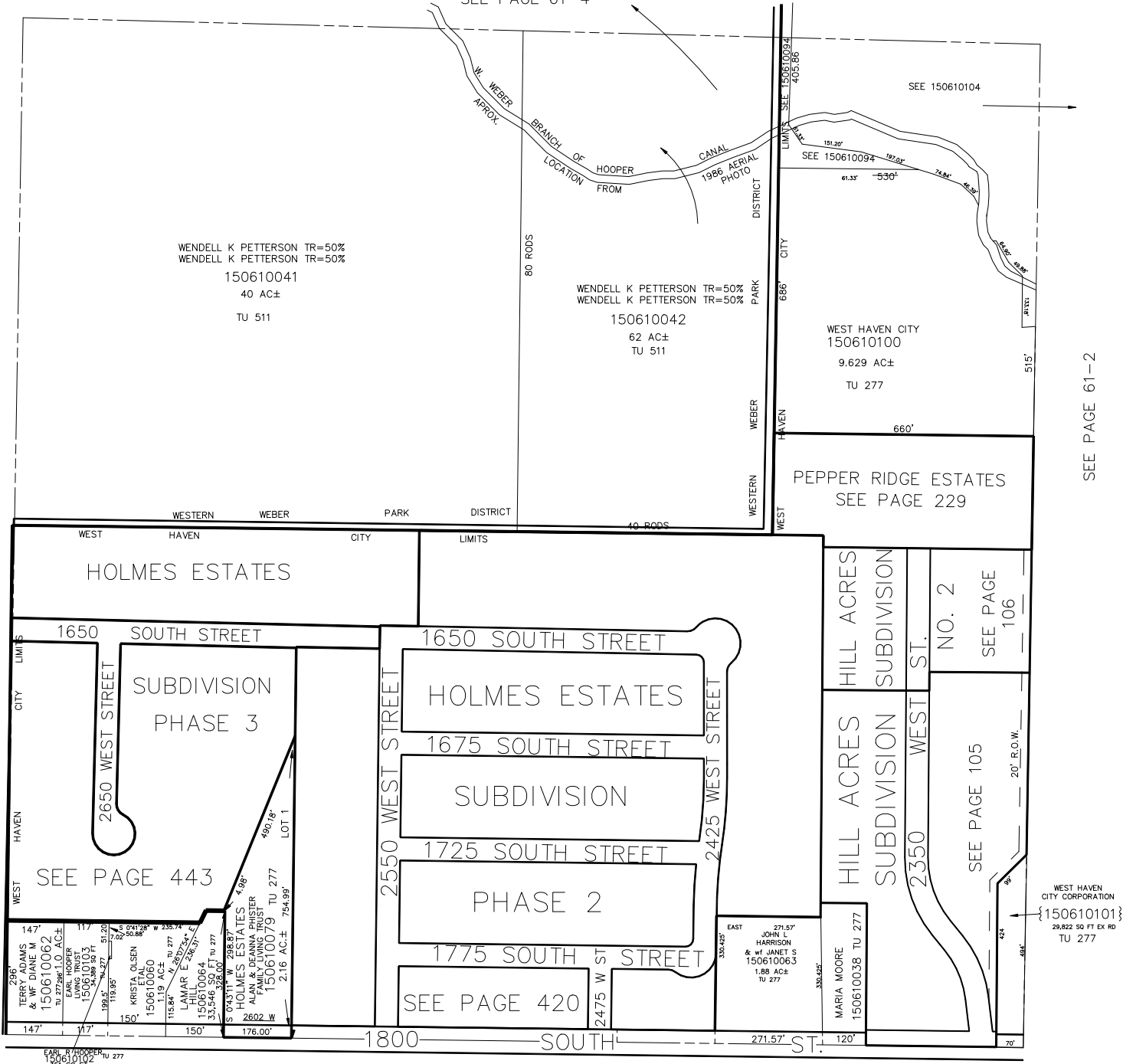
TAXING UNIT: 277,511

SCALE 1" = 200'

SEE PAGE 61-4

SEE PAGE 60-2

SEE PAGE 61-2



EARL B. HOOPER  
150610102 TU 277

WEST HAVEN CITY CORPORATION  
150610101  
29,822 SQ FT EX RD  
TU 277

SEE PAGE 75